

rangehood & dryer ducting

**MANROSE®**



**KITCHEN & LAUNDRY EXTRACTION**  
[www.securimax.co.nz](http://www.securimax.co.nz)

“proven reliable solutions”

# for the Kitchen

**MANROSE**  
CLASSIC

Extraction of cooking fumes at their source is essential for moisture and odour reduction in the home. To help achieve this all kitchen rangehoods should be ducted outside.

Manrose Kitchen Rangehood Ducting Kits are designed to extract fumes efficiently and will fit most rangehoods. They can be easily installed by the home handyman or a qualified tradesperson.

## RANGEHOOD DUCTING KITS

There are three ducting options available for the kitchen rangehood, through an adjacent wall, through the soffit (under the eave) or up through the roof. Designed with rangehood noise reduction in mind, Manrose Rangehood Ducting Kits are also fully compliant to AS/NZS 60335.2.80.

### THRU WALL

Duct Size	Description	Order Code
125mm	Rear Vent Gravity Grille	DCT1162
150mm	Top & Rear Vent Weatherproof Cowl	DCT2592

For added weather protection use the weatherproof cowl as included in DCT2592

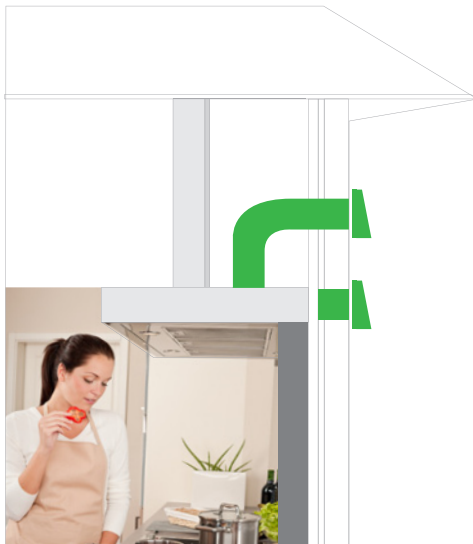
### SOFFIT

Duct Size	Description	Order Code
150mm	Thru Soffit	DCT1161
150mm	Thru Soffit - Galv Tube	DCT1259♦
150mm	Thru Soffit - Semi Rigid	DCT2323♦

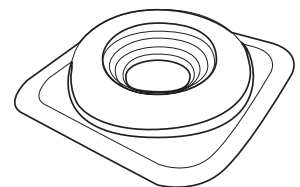
All systems include 3 metres of Aluminium Duct  
♦ Also includes 900mm of Solid Tube  
♦ Also includes 3 metres of Semi-Rigid Duct

### THRU ROOF

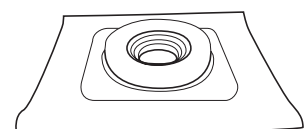
Duct Size	Description	Order Code
150mm	Thru Roof - Iron	DCT2324
150mm	Thru Roof - Tiled	DCT2325



### THRU- ROOF Flashing Options



For Iron Roof



Tiled Roof

Dryer Ducting Kits effectively remove the moist warm air generated from clothes dryers and expel it directly outside. This process eliminates the build up of dampness, helping to keep your home dry and free from condensation.

- Designed for today's modern & classic dryers.
- Ducting Kit suits dryers with a 100mm outlet.
- The square to round elbow will fit snugly onto most 100mm dryer outlets.
- Easily installed in confined spaces.

- Fully complies to AS/NZS 60335.2.80.
- 2 Year Warranty.

## INVERTED & WALL MOUNTED DRYER DUCTING KIT

Duct Size	Model No.	Description	Order Code
100mm	DKSD100	Soffit Ducted	DCT1263

## CLASSIC THRU WALL FAN KIT

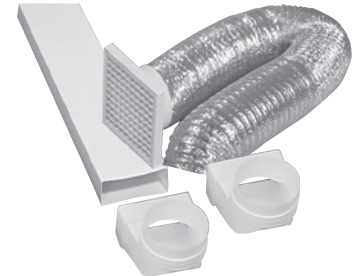
Duct Size	Model No.	Performance	Order Code
100mm	XP100S	23l/s, 85m <sup>3</sup> /hr	FAN0053
125mm	XP125S	36l/s, 130m <sup>3</sup> /hr	FAN0080
150mm	XP150S	87l/s, 313m <sup>3</sup> /hr	FAN0135

## PRO SERIES THRU WALL FAN KIT

Duct Size	Model No.	Performance	Order Code
125mm	XPLP125SS	36l/s, 130m <sup>3</sup> /hr	FAN0614
150mm	XPLP150SS	87l/s, 313m <sup>3</sup> /hr	FAN0621

### DRYER DUCTING KIT SOFFIT DUCTED

For soffit ducted free standing dryers extra rectangular ducting and a connector will be required Order Codes: DCT0013 & DCT0014).



### MANROSE THRU WALL FAN KITS

- Thru wall ventilation kits are ideally suited to ventilate laundry areas where utilities are adjacent to exterior walls.
- Thru wall kit includes fan, ducting and grille.
- Fully Building Code compliant
- 5 Year Warranty



MANROSE  
CLASSIC



MANROSE  
PRO-SERIES

### NZS 4303:1990

The New Zealand Building Code regulations require that any fan installed in a bathroom, toilet, laundry or kitchen must have the exhaust air ducted to the outside of the home. This eliminates the build up of an unhealthy concentration of moisture in roof cavities.



# DUCTING KIT CONTENT

	Thru Wall Rear Vent	Thru Wall Rear/Top	Soffit Kit	Soffit Kit Galv Tube	Soffit Kit Semi-Rigid	Thru Roof 125 Iron	Thru Roof 150 Iron	Thru Roof Tiled	Dryer Soffit Kit
Semi Rigid Duct - 400mm length	✓								
Semi Rigid Duct - 1.5m length		✓							
Semi Rigid Duct - 3m length					✓		✓	✓	
Solid Tube - Galvanised 900m length				✓			✓	✓	
Flexible Aluminium - 3m length		✓	✓	✓	✓	✓			✓
Flat Channel Ducting - 0.75m length									✓
White Eggcrate Grille					✓				✓
White Gravity Grille	✓	✓							
White Fixed Louvre Grille			✓	✓					
White Weatherproof Cowl		✓							
2 x Rec to Round 90 Elbows									✓
150:125 Reducer		✓			✓	✓	✓	✓	
150mm Connector		✓			✓		✓	✓	
Thru Roof Cowl						✓	✓	✓	
Flashing - Dektite						✓	✓		
Flashing - Lead								✓	
Duct Tape	✓	✓	✓	✓	✓	✓	✓	✓	✓

## COMPONENTS LIST

### MANROSE DUCTING

Type	Diameter (mm)	Length (m)	Order Code
Aluduct Aluminium Flexible	100	1	DCT0357
Aluduct Aluminium Flexible	125	1	DCT0358
Aluduct Aluminium Flexible	150	1	DCT0359
Semi Rigid	100	1.5	DCT0333
Semi Rigid	125	1.5	DCT0334
Semi Rigid	150	1.5	DCT0335
Low Profile Flat Channel	110 x 54	1.5	DCT0013
Low Profile Flat Channel	204 x 60	1.5	DCT0519
Low Profile Flat Channel	220 x 90	1.5	DCT1443
Low Profile Flat Channel	300 x 25	1.5	DCT1460
Galvanised Solid Tube	100	0.9	DCT0151
Galvanised Solid Tube	125	0.9	DCT0152
Galvanised Solid Tube	150	0.9	DCT0153
White Finish PVC Tube	100	0.9	DCT1424
White Finish PVC Tube	125	0.9	DCT1425
White Finish PVC Tube	150	0.9	DCT1426

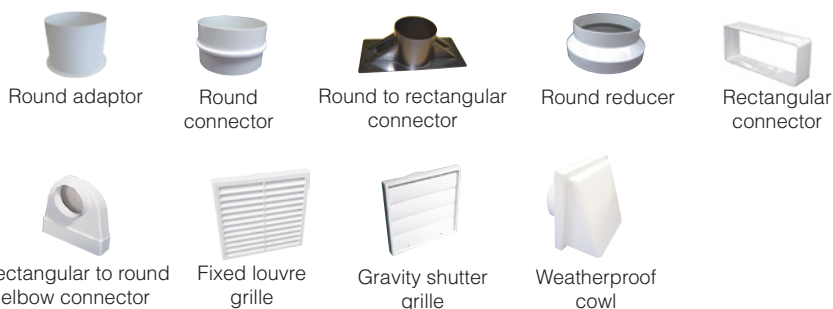
All ducting complies with NZ Building Code fire rating requirements.

### MANROSE CONNECTORS & ADAPTORS

Type	Size (mm)	Order Code
Round Adaptor	125	DCT0448
Rect : Round Adaptor	335 x 155 : 125	DCT1360
Round Connector	100	DCT0159
Round Connector	125	DCT0037
Round Connector	150	DCT0059
Round Reducer	150 : 125	DCT2066
Round Reducer	150 : 100	DCT2122
Rectangular Connector	110 x 54	DCT0014
Rect : Round Elbow Connector	110 x 54 : 100	DCT0124

### MANROSE WALL/CEILING GRILLES

Type	Size (mm)	Order Code
White Fixed Louvre	100	DCT0025
White Fixed Louvre	125	DCT0041
White Fixed Louvre	150	DCT0063
White Gravity Shutter	100	DCT0029
White Gravity Shutter	125	DCT0044
White Gravity Shutter	150	DCT0066
White Weatherproof Cowl	100	DCT0018
White Weatherproof Cowl	125	DCT1030
White Weatherproof Cowl	150	DCT1031



For the full range of **MANROSE** Fans, Ducting, Grilles and Accessories visit our websites.  
[www.securimax.co.nz](http://www.securimax.co.nz)    [www.manrose.com.au](http://www.manrose.com.au)

Securimax reserves the right to alter specifications without notice.

Dealers Stamp: